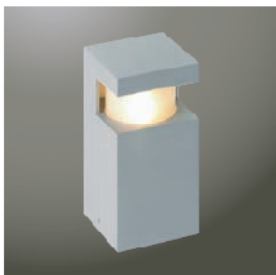
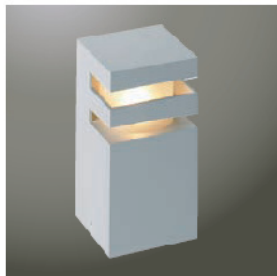
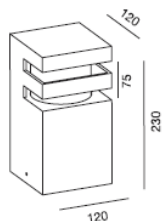
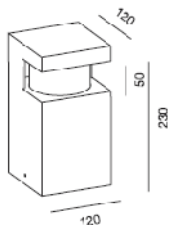


Nom**Borne pollux**

[POLLUX IV]



[POLLUX V]

*Fabricant* : Wever & Ducre*Couleur* : Aluminium*Source* : 1x40W G9 ou 1x18W G24d2*Référence* : Pollux**Dimensions****Autres caractéristiques** | H-PIN 25-40WG9 | 230V-50Hz |  | IP55 | CE | (P) | D |  |  | TC-T 18WGX24d-2 | 230V-50Hz |  | VVG | IP55 | CE | (P) |  | 